

PRODUCT CATALOG



elpack

**PACKAGING SOLUTIONS FOR PHARMACEUTICAL PRODUCTS OF THE
HIGHEST QUALITY**

ABOUT US

elpack collaborates as a supplier with the major players in the pharmaceutical industry, delivering the best packaging solutions of all kinds to its customers. You have likely come into contact with some of our products in your everyday life: whether it's the packaging of your nasal drops, the globules in your medicine cabinet, the infusion bag in the hospital, or the glass packaging of a potent oncological drug – they all come from **elpack**. And whether it's about the packaging itself, its sorting, refinement, individualization, assembling, or quality assurance, **elpack** is the right partner in every case.



ASSEMBLING

Glass bottle, pipette, and closure are packaged together, for example, as a nasal drop set.
Verschluss wird zB. als Nasentropf-Set



SEPERATION

Large batch sizes are repackaged into smaller packaging units.



FINISHING

Products are repackaged, or 'goodies' are added to the packaging.



QUALITY ASSURANCE

elpack is the only company in Europe that can reduce the typical waste rates of around 30% for glass packaging to below 1%. And all of this is done by hand!



PACKAGING SOLUTIONS

We supply packaging (e.g., glass or plastic containers), closures, folding boxes, and inserts for our customers, establishing ourselves as a reliable partner in the value chain.

OUR MISSION

As "elpack" we provide our clients with the ideal packaging solution for their products as quickly as possible. We achieve this by adhering to the highest quality standards through manual selection, shared values, and unique expertise—thereby building sustainable partnerships.

OUR VISION

According to the motto "human skills outperform mechanical processing", we aim to become the leading provider of quality assurance for the pharmaceutical sector in the field of selection. Our highly trained staff is our most valuable asset. We operate as a one-stop-shop provider, also serving as an external warehouse if needed. We supply packaging, closures, folding cartons, and inserts for our clients, establishing ourselves as a reliable partner in the value chain

OUR COMPANY VALUES

We build personal relationships with our clients to collaboratively develop the best solutions and be perceived as a trusted partner. We are committed to upholding the highest quality standards and maintain these with the utmost care. We strive to make our clients' work processes as simple as possible within the scope of our capabilities, and we aim to handle as much of the workload as possible during the order processing. For us, improving quality takes precedence over speeding up processes. Therefore, we want to deliver the right solution at the right price to our clients.

TABLE OF CONTENTS

Page	Items
5	DOPPER BOTTLES brown / blue / green / white
6	MEDICINE BOTTLES brown / white
7	RECTANGULAR SHAPED BOTTLES / SYRUP BOTTLES brown
8	MEPLAT BOTTLES
9	WIDE-NECK GLASS / CYLINDER GLASS
10	CREAM - / OINTMENT JARS and CONTAINERS / SCREW CAP with
11	SPRAY / ATOMIZER PUMP / PIPETTE SET
12	SCREW CAPS GL 18
13	SCREW CAPS PP 28
14	SCREW CAPS GL 22 - 28 / MCA / SNAP CAPS WITH FOAM INSERT CTC
15	SCREW CAPS WITH FOAM INSERT GK 32 - 68
16	GELATIN CAPSULES
17	OINTMENT JARS
18	LIDDED SCREW JARS
19	SL JARS
20	SL JAR LIDS
21	SCREW JARS
22	MINI TUBES
23	MINI TUBE TOOLS
24	PLASTIC DROPPER BOTTLES / NOVELIA® DROPPER BOTTLES
25	CREAM DISPENSERS / BELLOWS BOTTLES
26	ALUMINUM TUBES
27	INFUSION BOTTLES WHITE / INJECTION BOTTLES
28	INJECTION BOTTLES TUBULAR GLASS / INFUSION BOTTLES PP
29	INJECTION BOTTLES PP + COC
30	INTRA CON BAGS / SUITABLE STOPPERS AND CAPS
31	STOPPERS / HANGERS FOR INFUSION - INJECTION BOTTLE
32	CAPS FOR INFUSION / INJECTION BOTTLES
33	MEDICINE BOTTLES PET / SCREW CAPS ROPP 28
34	RINSING SOLUTION BOTTLES / CLOSURES
35	ROUND PLASTIC BOTTLES / CLOSURES
36	CREAM / LOTION BOTTLES / CLOSURES
37	DISPENSER BOTTLES / SCREW CAPS
38	COSMETIC BOTTLES OVAL / CLOSURES
39	STACKABLE CANISTERS / FOLDABLE CANISTERS / POLYTAINER
40	BUCKETS / TUBS / SUPPOSITORIES
41	VARIOUS TOOLS / DEVICES
42	SYMBOL ABBREVIATIONS AND EXPLANATIONS

DROPPER BOTTLES brown / blue / green / white

Standard in glass quality HC III, packaged with low particle content.
Additional sizes, glass qualities, colors, and packaging sizes available upon request.

Art. No.	NV [ml]	Glass type	Thread	Color	H [mm]	Ø [mm]	SU
001000	5	HC III	GL 18	amber	53,2	22,5	310
001020					43,3	25,4	160
001031				blue	48,0	22,0	250
001100	10			amber	60,7	25,0	187
001105					60,7	25,0	187
001122					63,7	24,2	279
001133				blue	63,4	24,0	285
001140				white	63,7	24,2	160
001153				green	59,2	25,0	192
001161				HC II	63,7	24,2	198
001205	15	HC III	GL 18	amber	65,5	26,5	144
001300	20				72,2	29,5	180
001305					72,2	29,5	180
001330	blue			72,7	28,8	143	
001405	25			amber	75,6	32,0	168
001500	30				80,2	33,0	104
001502					79,2	25,0	150
001530	blue			84,7	31,0	126	
001700	50			amber	91,7	38,0	105
001702					91,7	38,0	114
001733		blue	92,2		37,2	117	
001900	100	HC III	GL 18	amber	110,7	47,0	68
001910					113,2	45,5	72
001914					110,7	47,0	68
001930				blue	104,2	48,5	50



MEDICINE BOTTLES

Art. No.	NV [ml]	Glass type	Thread	Color	H [mm]	Ø [mm]	SU
011005	30	HC III	PP 28	amber	70,5	34,2	100
011011	50			white	80,5	40,5	99
011012				amber	81,1	36,0	99
011022	100				96,8	51,2	88
011025					96,0	50,5	56
011044	150				111,0	56,8	70
011054	200				118,5	63,0	60
011055					118,0	63,2	49
011062	250				133,0	65,0	51
011064					136,0	65,0	39
011070	300				136,5	71,5	36
011075					134,5	72,3	30
011080	500			161,0	82,0	33	
011082				161,0	83,0	20	
011092	1000			231,0	95,0	24	
011095				230,6	93,5	22	



RECTANGULAR SHAPED BOTTLES

Art. No.	NV [ml]	Glass type	Thread	Color	H [mm]	L [mm]	W [mm]	SU
012020	50	HC III	GL 18	amber	103,7	43,0	24,5	135
012021	100		PP 28		129,4	52,0	30,5	91
012022	200				160,7	64,5	37,5	60
012023	250				151,9	74,0	46,0	45
012024	500				210,9	87,8	51,8	28



SYRUP BOTTLES

Other colors and sizes available upon request

Art. No.	NV [ml]	Glass type	Thread	Color	H [mm]	Ø [mm]	SU
015005	60	HC III	PP28	amber	90,9	42,0	160
015025	100				104,8	46,1	72
015045	150				122,8	51,6	56
015050	200				133,3	57,9	67
015060	250				142,9	61,7	60
015094	1200				256	82,1	14



MEPLAT BOTTLES

Available in brown (white upon request) in glass quality HC III.

Art. No-	NV [ml]	Color	Thread	Form	H [mm]	W [mm]	L [mm]	SU
003015	100	amber	GL22	octagonal	135,7	30,5	52,5	60
003022	125				141,5	33,0	57,0	55
003023		white	141,5		33,0	57,0	55	
003051	250		PP 28		183,4	40,5	68,5	36
003055		182,0			41,5	68,5	36	
003065	500	amber	MCA		217,0	51,0	88,5	21
003066	500			oval	219,0	50,5	86,0	32
003069	500		PP 28	216,0	51,0	88,5	21	
003072	700			octagonal	230,0	67,8	95,0	16
003085	1000		oval	264,0	63,3	108,5	12	



WIDE – NECK GLASS / CYLINDERGLASS

Standard in brown glass HC III. Other colors and sizes available upon request.

Art. No.	NV [ml]	Type	Color	Thread	H [mm]	Ø [mm]	SU	
004014	30	wide-neck	amber	GL 32	68,0	36,0	126	
004024	50				40,5	44,0	85	
004034	75			CTC 43	76,0	48,5	68	
004044	100			GL 40	92,5	50,0	63	
004045				CTC 43	89,5	50,0	63	
004048				GL 40	92,5	50,0	56	
004052	125					98,0	54,0	36
004074	200					109,0	63,0	35
004086	250					113,0	66,0	42
004103	500					154,0	84,0	20
004105						154,0	84,0	20
004112	1000					180,5	103,5	12
004115						180,5	103,2	12
017011	50			cylinder	white	GL 40	69,5	44,0
017018		amber	69,5		44,0		72	
017021	100	white	GL 45		85,5	48,5	45	
017022		amber			85,5	48,5	63	

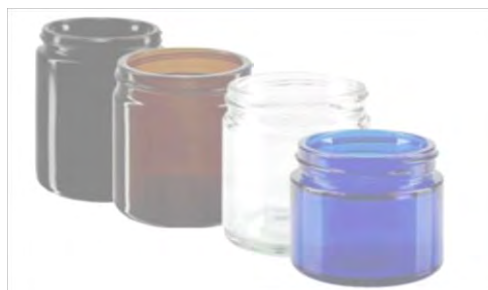


CREAM - / OINTMENT JARS and CONTAINERS

Standard in brown glass HC III. Packaged to be low in particles. Other colors, sizes, glass qualities, and packaging sizes available upon request.

Art. No.	NV [ml]	Glass type	Color	Form	H [mm]	Ø [mm]	SU
013020	60	HC III	amber	round	44,0	53,5	84
013021	50		white		69,5	44,0	40
013022			blue		44,0	54,0	33
013040	120		amber		63,5	60,7	42
013045	180				81,8	63,5	42

Art. No.	Lid	Color				SU
013110	for bottle 013021+22	white				84
013111	for bottle 013020	black				40
013112	for bottle 013022	white				33
013121	for bottle 013040	black				42
013125	for bottle 013045					



BRUSHES

For bottles with GL 18 thread in various designs.

Art. No.	Thread	For bottles:	Color	Material	SR	color of the brush
100146	GL 18	10 ml	white	HDPE		black
100147					x	
100148		20 ml				
100150		30 ml				



SPRAY / ATOMIZER PUMP

For bottles with GL 18 thread in various designs.

Art. No.	Thread	Color	Material	Additional information	RTL [ml]	Capacity [ml]
100160	GL18	white	PP	spray pump	150,0	0,15
100161				spray pump for 50 ml	50,0	
100162				spray pump for 30 ml	45,0	
100166				Pump with NASAL ADAPTER	83,0	0,14
102192	PP 28			Pump with THROAT ADAPTER	80,0	0,20
102600				spray pump	160,0	0,16

PIPETTE SET

For bottles with GL 18 thread in various designs.

Art. No.	For bottles	Closure material	color suction cap	TV [ml]	additional information	SU
101010	10 ml	PP white	TPE red	0,7	curved ball tip	500
101020	15 ml					
101030	20 ml					
101040	30 ml					
101050	50 ml					
101060	100 ml					
101015	10 ml	PP white	TPE red	0,7	individually packaged and sterilized + OS	500
101016					packed in sets of 4 and sterilized + OS	

All sizes available in the following combinations, with and without OS:

white closure + red suction cap
 white closure + white suction cap
 white closure + black suction cap
 black closure + red suction cap
 black closure + white suction cap
 black closure + black suction cap



SCREW CAPS GL 18

For bottles with GL 18 thread in various designs.

Art. No.	SC	ED	VD	FI	CSL	SR	GR	Color
100002 ¹	x							white
100009	x					x		white
100010	x					x		white
100011	x					x		white
100019 ²	x					x		white
100020	x					x		white
100024		x						white
100030			x			x		white
100040			x					white
100045		x				x		white
100052		x				x		white
100053		x				x		white
100054		x				x		black
100055						x	x	white
100061				x				white
100080 ³						x		white
100092		x			x			white
100110 ⁴					x	x		white
100124				x	x			white
100126				x	x	x		black
100173		x						black
100190		x						blue

¹ autoclavable

² individually packaged, sterilized

³ globules ⁴ for oily solutions

Legend

SC	Sealing Cone
ED	Edge Dropper
VD	Vertical Dropper
FI	Foam insert
CSL	Child Safety Lock

SR	Safety ring
CR	Casting Ring
C	Corrugation
SI	Sealing Insert
SB	Surge Brake



SCREW CAPS PP 28

For bottles with PP 28 thread in various designs.

Art. No.	SC	ED	SB	FI	SR	Color
102002	x					white
102013	x				x	white
102015					x	white
102016					x	black
102019 ¹	x				x	white
102023			x			white
102032			x		x	white
102033			x			white
102039			x			black
102060				x	x	white
102071				x		white
102080		x				white
102083		x				black
102102				x		black
102160				x		black
102197 ²						white
102198 ³						white
102202 ⁴	x				x	white
102400 ⁵						clear
102401 ⁶						clear

¹ sterilized individually packaged

² 28/410 Dispenser

³ 28/415 Dispenser

⁴ PP 31,5

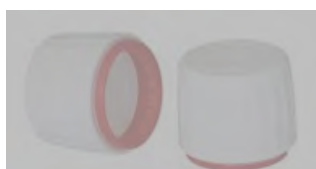
⁵ Measuring cup with graduation of 20 ml

⁶ Measuring cup with graduation of 15 ml

Legend

SC	Sealing Cone
ED	Edge Dropper
SB	Surge Brake

SR	Safety ring
FI	Foam insert



SCREW CAPS GL 22 - 28 / MCA

For bottles with thread in various designs.

Art. No.	Thread	Color	Material	SC	ED	FI	SU
100422	GL 22	white	PP			x	1000
100432					x		1000
100433		black					1000
100437							1000
100472						x	1000
100475 ¹							100
100483 ²		gold		aluminium			
100552	GL 25	black	PP	x			100

¹ pump 22/400

² can only be sealed with roller machines



SNAP CAPS WITH FOAM INSERT CTC

Art. No.	Description	Color	Material	SU
103521	CTC 43	white	PE	1500



SCREW CAPS WITH FOAM INSERT GL 32 - 68

Art. No.	Description	Color	Material	SU
112000	screw cap GL-DIN 32	white	PP	500
112003		black		
112102	screw cap GL-DIN 40	white		
112103		black		
112110	screw cap GL-DIN 40 + sealing lip	white		
112201	screw cap GL-DIN 45	black		
112301	screw cap GL-DIN 55	white		
112302		black		
112401	screw cap GL-DIN 68	black		



GELATIN CAPSULES

Made of hard gelatin, mounted on a card

Size	Grid	Color	pcs/card	SU
00	F	ivory	60	1440
0				1140
1				1320
2				1440
3				1560
4				1680



Capsolut FILLER

Art.No.	Size	Grid	Color	for (pcs)	SU
444500	00	F	white	60	1
444501	0				
444502	1				
444503	2				
444504	3				
444505	4				

Art.No.	Size	Grid	Color	for (pcs)	SU
444506	00	F	white	120	1
444507	0				
444508	1				
444509	2				
444510	3				
444511	4				

Art.No.	Size	Grid	Color	for (pcs)	SU
444515	0	F	white	300	1
444516	1				
444517	2				
444518	3				



OINTMENT JARS

Made of white PP with white PP screw caps, supplied in bulk. Other cap colours available upon request.

Art. No.	NV [g]	Option	Material / Color	H [mm]	Ø [mm]	APO	SU
202495	5		PP white	17,0	26,0	25	
202490							400
202505	10	LOW		19,0	35,0	25	
202500							400
202506		HIGH		31,0	26,0	25	
202501							400
202515	20	LOW		36,0	35,0	25	
202510							400
202516		HIGH		40,0	31,0	25	
202511							400
202525	30			48,0	35,0	25	
202521							400
202535	50	LOW		36,0	53,0	25	
202531							400
202536		HIGH		56,0	42,0	25	
202532							400
202545	75			52,0	53,0	25	
202541							400
202555	100			67,0	53,0	25	
202551							400
202565	150			60,0	69,0	25	
202561							250
202575	200			78,0		25	
202571							200
202585	250		81,0	76,0	25		
202582						100	
202595	300		97,0		20		
202591						120	
202416	500	LOW	85,0	100,0	10		
202413						72	
202415		HIGH	113,5	90,0	10		
202411						72	
202596	900		128,0	106,0	5		
202594						54	
202597	1000		159,0		5		
202593						54	



LIDDED SCREW JARS

Art. No.	NV [g]	Option	Material / Color	H [mm]	Ø [mm]	SU
202100	5		PP white	17,0	26,0	400
202104	10	LOW		31,0		
202106	25	HIGH		36,0	35,0	
202108	20	LOW		40,0	31,0	
202110	30			48,0	35,0	
202114	50			56,0	42,0	
202116	75			52,0	53,0	
202118	100					
202120	150			60,0	69,0	
202122	200			78,0		
202124	250			81,0	76,0	



SNAP LOCK JARS

Universal container made of white PP with a tamper-evident and originality seal made of white PE.

comprehensive container system for versatile applications

easy tearing of the originality seal

high stability and break resistance

simple and quick resealing

high degree of automation possible

easily and quickly fillable due to the large opening

Art. No.	NV [ml]	Material / Color	H [mm]	Ø [mm]	SU
203406	20	PP white	50,3	27,1	200
203408	35		53,5	34,0	100
203410	65		56,0	42,5	100
203414	100 LOW		46,8	56,4	116
203412	100 HIGH		86,5	42,5	100
203416	125		62,5	55,6	378
203418	200		68,7	66,0	315
203420	225		80,0	66,0	270
203424	325		113,0	65,5	180
203426	500		85,0	91,7	123
203428	650		112,5	91,6	96
The lids are adjusted to the number of containers					



LIDS FOR SNAP LOCK JARS

With tamper-evident and originality seal made of white PE

Art. No.	Suitable for:	Material / Color	H [mm]	Ø [mm]	SU
203407	203406	PP white	11,0	30,6	adjusted
203409	203408		11,4	38,0	
203411	203410 203412			47,3	
203415	203414 203416		11,2	60,0	
203419	203418 203420 203424		17,0	69,0	
203427	203426 203428		21,9	96,0	



SREW JARS

Made of PE with lid and originality ring. Screw cap with safety ring available in various colours, as well as natural PE inner seal

Art. No.	NV [ml]	Material / Color	H [mm]	Ø [mm]	SU
202400	250	PE white	70,0	95,0	96
202410	500		103,0		
202440	1000		166,0		66
202460	1600		212,0	103,0	40

Art. No.	Design	Material / Color	H [mm]	Ø [mm]	SU
202480	lid with originality seal	PE red	20,0	98,5	500
202481		PE blue		85,0	
202482		PE green		95,0	
202483		PE white			
202485	inner seal	PE clear	10,0	93,0	1000



MINI TUBES

MINIMS oder REDIPAC

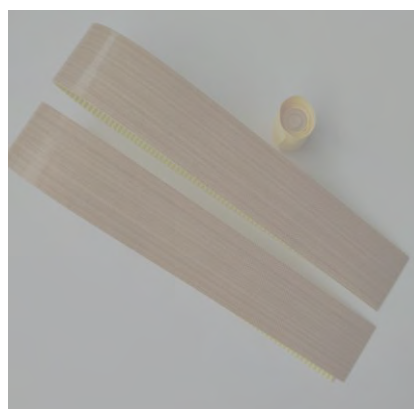
Mini tubes made of PP + natural PE for single use. Mini tubes can only be sterilized once

Art. No.	NV [ml]	Information	Material	Color	Ø [mm]	L [mm]	SU	
300520	2,5	not sterilized	PP	clear	14,8	57,9	1.000	
300522		set of 10, sterilized					2.500	
300523		set of 50, sterilized					2.500	
300524		set of 10, sterilized					500	
301500	1	strips of 5 pcs			PE	11,6	43,3	7.500
301503		2 strips / bag 10 bags / outer bag 5 outer bags / carton - sterilized						500
301504		10 strips / bag 50 bags / outer bag 1 outer bag / carton - sterilized						2.500
301510		strips of 5 pcs						7.500
301514		10 strips / bag 50 bags / outer bag 1 outer bag / carton - sterilized						2.500
301515		10 strips / bag 10 bags / outer bag 1 outer bag / carton - sterilized						500



MINI TUBE TOOLS

Art. No.	Description	SU
445910	Mini tube sealing machine for sealing mini tubes of 1 and 2.5 ml	1
444302	Tube holder for 9 mini tubes of 2.5 ml	
444316	Tube holder for 10 mini tubes of 1 ml (2 stripes of 5 pcs)	
444318	Self-adhesive, coated non-stick liner. 1 set = 2 pieces	



PLASTIC DROPPER BOTTLES

PE/PP bottle, PE dropper, and PE closure with a plastic originality ring packaged together. Bottle, dropper, and closure in one bag (P/B = pcs/bag, see table).

Art. No.	NV [ml]	Material / Color			H [mm]	Ø [mm]	P/B	SU
		bottle	dropper	closure				
210201	10	LDPE white	LDPE white	HDPE white	60,4	25,0	50	500
210202		LDPE white	HDPE white	LDPE white	63,5	24,1	50	250
210203		LDPE white	LDPE white	HDPE white	60,4	25,0	10	250
210223		LDPE white	LDPE clear	HDPE white	63,5	24,1		
210810		PP white	LDPE white	HDPE white			1	250
210300	15	PE clear	LDPE clear	HDPE white	63,0	25,3	1	200
210051	20	PE white	PE white	PP white / blue	60,5	28,2	1	800
210210	10	LDPE clear	LDPE clear	HDPE white	60,4	24,1	1	50
210211		LDPE white	LDPE clear	HDPE white			50	500



NOVELIA ® DROPPER BOTTLES

HDPE SOFT bottle, contamination-free screw cap with originality ring packaged in a plastic bag. Bottle and cap in one bag (P/B = pcs/bag, see table). Shelf life of 24 months after sterilization, provided the packaging remains undamaged.

Art. No.	NV [ml]	Material / Color		Information	H [mm]	Ø [mm]	P/B	SU
		bottle	closure					
210702	10	HDPE soft clear	HDPE white	sterilized	54,0	22,3	1	500
210704								100
210706							10	100
210708							1	50
210716							10	500

Accessories

Art. No.	Description	VU
444741	torque screwdriver 0,9 Nm	1
444742	screw head for Novelia® closure	

CREAM DISPENSERS

Art.Nr.:	NV [ml]	Color	Material	H [mm]	Ø [mm]	SU
201501	50	white	PP	59,0	42,0	420
201502	100			96,0	44,0	255
201511	pump		PP/PE	58,0	40,4	



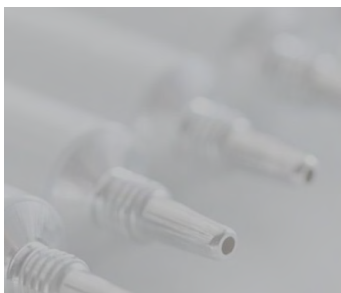
OVAL BOTTLES

Art. No.	NV [ml]	Color	Material	H [mm]	Ø [mm]	SU
211090	100	clear	HDPE	106,0	64,5	350
Pouring insert			LDPE	13,8	1,4	
Closure		white	PP	16,0	26,9	

ALUMINUM TUBES

Design: Double internal protective coating. CONICAL closure cap with or without membrane. All tubes for pharmaceutical use come with appropriate documentation. Special designs are possible, such as single- or multi-color printing, as well as closures in different colors. By default, we supply white tubes with white closures.

Art. No-	NV [ml]	Design	Thread	Latex ring	Ø [mm]	L [mm]	SU			
300000	5	Injection tip	M7	no	13,5	83,0	180			
300001				yes		76,0				
300002		Membrane		no		75,0	791			
300003							180			
300302							791			
300304							64			
300010	10	Injection tip	yes	16,0	98,0	180				
300016			no		90,0	91				
300025	20	Membrane	M11	yes	19,0	100,0	649			
300022						102,0				
300032	30	Membrane	M9	yes	25,0	120,0	364			
300332						374				
300333						60				
300042	50	Membrane	M11	no	35,0	145,0	364			
300044						60				
300051	100	Membrane	M11	no	35,0	165,0	186			
300052						30,0	180,0	252		
300061	135	Membrane	M11	yes	35,0	180,0	186			
300070	200					40,0	200,0	144		
220000	5	sterilized	Injection tip	M7	no	13,5	83,0	1.008		
220001	10						yes	16,0	80,0	1.458
220002										252
220005										1.456



INFUSION BOTTLES WHITE

Infusion bottle made of glass HC I according to DIN EN ISO 8536-1:2011-12, packed in a Safepack with low particle content.

Infusion bottle made of glass HC II according to DIN EN ISO 8536-1:2011-12, packed either on full-layer EURO pallets or in a Safepack with low particle content.

Art. No.	NV [ml]	Glass type	Thread	H [mm]	Ø [mm]	SU
005071	500	HC I	BK 32	177,0	78,0	35
005000	50	HC II		68,0	46,0	104
005020	100			104,0	49,0	104
005056	250			136,0	66,0	48
005072	500			177,0	78,0	33
005088	1000			225,0	95,0	15

INJECTION BOTTLES

Penetration bottles or vials according to DIN EN ISO 8362-4:2011-12 made of clear or amber glass, HC I / HC II / HC III, packaged in Safepack with low particle content.

Art. No	NV [ml]	Glass type	Color	Thread	H [mm]	Ø [mm]	SU
006100	10	HC I	white	BK 20	53,5	25,4	168
006402	30				62,8	36,0	90
006503	50		amber		73,0	42,5	130
006504			white		73,0	42,5	85
006600	100		white		94,5	51,6	88
006212	20	HC II	amber	BK 20	58,0	32,0	252
006213			white			36,0	140
006310	25		amber		73,0	42,5	90
006511	50		white				80
006514			100		amber	94,5	51,6
006612	100	amber	88				
006614	100	HC III	amber	BK 20	94,5	51,6	40



INJECTION BOTTLES TUBULAR GLASS

Penetration bottles or vials according to DIN EN ISO 8362-4:2011-12, made of clear or amber glass, HC I / II / III, packaged in Safepack with low particle content."

Art. No.	NV [ml]	Glass type	Color	Form	Thread	H [mm]	Ø [mm]	SU
019013	5	HC I	amber	cylindrical	BK 20	40,0	22,0	186
019202	10					54,5	20,5	221
019210	20		white			45,0	24,0	154
019400			amber			55,0	30,0	91
019404						100		
019205	10	HC II	amber	54,5	20,0	228		



INFUSION BOTTLES PP

The infusion bottles are packaged in a clean room and can be filled unwashed.

Infusion bottles made of PP can be autoclaved at 121 °C for 15 minutes.

The infusion bottles can also be supplied pre-sterilized (e-beam sterilization).

Pre-sterilization allows the bottles to be filled aseptically.

Post-sterilization is possible depending on the solution.

Neck finish according to ISO.

Art. No.	NV [ml]	Glass type	Color	Shape	Thread	H [mm]	Ø [mm]	SU
005025	100	PP	clear	round	BK 32	98,5	49,0	432
005034	250					142,0	50,0	144
005036	500					174,0	76,0	90
005038	1.000					203,5	93,0	60,0
005055	250					121,8	66,0	210,0
005075	500					157,6	78,0	135,0

INJECTION BOTTLES + COC

The injection vials are packaged in a cleanroom and can be filled without washing. Injection vials made of PP and COC can be autoclaved at 121°C for 15 minutes.

The injection vials can also be delivered pre-sterilized (e-beam sterilization); however, PP vials become more brittle, while COC vials remain unchanged.

Pre-sterilization allows the vials to be filled aseptically as well. Post-sterilization is possible depending on the solution.

Stoppers according to ISO 8536-2 and caps according to ISO 8536-3/7 are compatible.

Art. No.	NV [ml]	Material	Color	Form	Thread	H [mm]	Ø [mm]	SU
006050	3	PP	clear	round	BK 20	25,9	22,0	230
006030	5					37,9	22,0	230
006131	10		amber			48,7	32,0	162
006133						45,6	26,0	162
006231	20		clear			48,6	32,0	98
006233			amber			48,7	32,0	98
006330	25		clear			53,8	32,4	85
006532	50		braun			71,5	43,0	55
006534						66,5	43,0	55
006631	100		clear			87,6	49,0	41
024010	5	COC	clear	round	BK 20	40,0	22,0	4.140
024015								230
024020	10					45,0	24,0	2.592
024025								162
024030	20					55,0	30,0	1.620
024035								135
024050	50					73,0	42,5	770
024055								55
024060	100					94,5	51,6	432
024065								36



INTRA CON BAGS

The bags are equipped with an injection port (not "single-port" bags) and are sealed with a rubber stopper and crimp cap. See pages 31 and 32.

Infusion bags made of PP can be autoclaved at 121°C for 15 minutes.

Art. No.	NV [ml]	Material	Color	W [mm]	L [mm]	SU
206030	100	PP	clear	84,0	211,8	365
206230	250				245,8	525
206331	500				288,7	380
206530	1000			105,0	315,3	254



COMPATIBLE STOPPERS AND CAPS

Art. No.	Designation	Thread	Material	Color	SU
107510	Injection stopper	BK 20	Brombutyl	red	6.000
107513					4.800
106068	Intracon Caps			Aluminium	silver

STOPPERS FOR INFUSION BOTTLES

packaged according to DIN / ISO in PE double bag

Art. No.	Designation	Thread	Form	For bottle	Material	Color	SU
107001	Injection stopper	BK 32	round	DIN	Chlorbutyl	red	1.000
107011				ISO			1.600



STOPPER FOR INJECTION BOTTLES

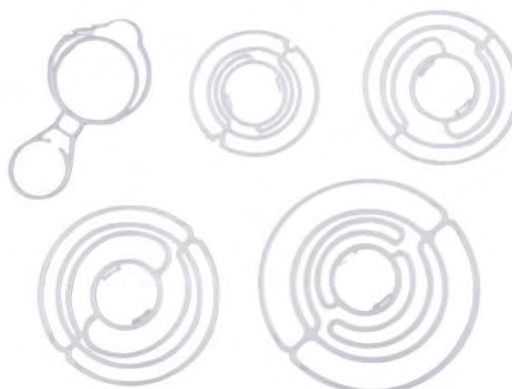
packaged according to ISO in PE double bag

Art. No.	Designation	Thread	Form	For bottle	Material	Color	SU
107510	Injection stopper	BK 20	round	ISO	Brombutyl	red	6.000

HANGERS FOR INFUSION BOTTLES

According to DIN / ISO in various designs. Packaged in PE bag / carton.

Art. No.	Designation	For bottle	Material	Color	SU
106610	Spiral hanger DIN	1000 ml	PE	clear	1.100
250200	Light protection hanger	100 ml - 1000 ml	PE	blue	1.700
250201					100



CAPS FOR INFUSION BOTTLES

According to DIN / ISO in various versions. Packed in a PE bag/carton.

Art. No.	Designation	For bottle	Thread	Material	Color	SU
106250	Crimp cap	DIN	32 full tear-off	Aluminium	silver	1.000
106260			32 center tear-off			
106278	Combi cap	ISO	32 ISO	Aluminium PP	clear	3.300
106280	Combi cap	DIN	32 DIN	Aluminium PP	red	3.500
106282					blue	3.300
106284					green	3.500
106288					clear	3.300
106320	Euro cap	DIN	32 full tear-off	Aluminium PP	colorless	1.000

CAPS FOR INJECTIONS BOTTLES

According to DIN / ISO in various versions. Packed in a PE bag/carton.

Art. No.	Designation	Thread	Material	Color	SU
106000	Crimp cap	20 full tear-off	Aluminium	colorless	1.000
106002				silver	
106004				gold	
106006				red	
106010		20 center tear-off		blue	
106014				colorless	
106016				silver	
106058	FLIPP OFF cap	20		red	7.000
106068	INTRA CON cap			colorless	
				blue	



MEDICINE BOTTLES

Packed with low particles.
Pharmaceutical-grade version with corresponding approvals according to Ph.Eur.Kopöe and FDA.
Other sizes and colors on request.



Art. No.	NV [ml]	Color	Thread	H [mm]	Ø [mm]	SU
031000	30	amber	ROPP 28	62,3	35,0	192
031100	50			77,2	39,5	154
031200	100			94,5	48,0	104
031300	150			106,0	54,0	80
031400	200			116,0	59,7	63
031500	250			129,5	62,3	60
031700	500			153,3	78,0	35
031800	1000			220,0	87,5	30
031641	300	clear		139,0	63,5	100
031740	500			162,5	75,5	35



SCREW CAPS ROPP 28

For PET bottles with thread ROPP 28, in different versions.

Art. No.	SC	SB	SR	RI	Color	Material	Info	SU	Pieces / carton
031910		x	x	coarse	white	HDPE	SB = PE	1	2.500
031920			x				SI = PE foam white		500
031922	x		x						

Legend

SC	Sealing cone
SR	Safety ring

RI	Ribbing
SB	Surge Brake



IRRIGATION BOTTLES

Bottles made of natural PP

Art. No.	NV [ml]	Thread	Material / Color	H [mm]	W [mm]	L [mm]	SU
200970	100	V36 SR	PP / clear	90,0	50,0	50,0	440
200972	250			131,5	60,0	60,0	186
200974	500			152,4	78,0	78,0	105
200976	1.000			194,4	94,0	94,0	60

CLOSURES FOR IRRIGATION BOTTLES

Closure with safety ring and mounted rubber stopper. Other closures on request

Art. No.	Additional information	Material / Color	Thread	Ø [mm]	H [mm]	SU
200991	with chlorobutyl stopper	PP white	VR 36 SR	40,1	24,5	1.900
200992	with aluminium foil and plugs		36/27 VISTOP	40,1	24,8	
200994	with PE insert + safety ring	PP / green	VR 36 SR	40,1	24,5	



PLASTIC BOTTLES ROUND

HDPE containers with various closures

Art. No.	NV [ml]	Additional Information	Material	Color	Form	H [mm]	Ø [mm]	SU
200500	250		HDPE	clear	round	160,0	53,0	250
200501								50
200510	500					204,0	63,0	125
200511								24
200520	1.000					284,0	80,0	63
200521								21
200522								"UN" certification

CLOSURES FOR PLASTIC BOTTLES

Art. No.	Designation	Material	Color	VU	Carton
200550	Standard closure	PP	red	100	3.600
200551			white		
200556	Degassing closure		red		1.300
200560	Flip-top closure		white		2.300
200561			red		1.300
200570	Child-resistant cap				



CREME / LOTION BOTTLES

Container made of PE, extra soft, for easy squeezing and emptying

Art. No.	NV [ml]	Material	Color	H [mm]	Ø [mm]	SU
200100	100	PE	white	99,7	45,0	450
200110	250			157,2	55,6	170
200120	500			193,0	66,4	120
200130	1.000			246,1	83,0	65

CLOSURES FOR CREME / LOTION BOTTLES

Art. No.	Designation	Material	Color	Thread	Ø [mm]	H [mm]	Carton
200153	Flip-top closure	PP	white	32	34,7	26,0	1.600
200154	Closure with tether and cap	HDPE			34,5	60,0	1.500



DISPENSING BOTTLES

HDPE container

Art. No.	NV [ml]	Material	Color	H [mm]	L [mm]	W [mm]	SU
200024	500	HDPE	clear	163	74	58	200

CLOSURES FOR DISPENSING BOTTLES

Art. No.	For Article	Material	Color	Seal	Carton
200070	200024	HDPE	white	PE foam	500



OVAL / ROUND COSMETIC BOTTLES

HDPE container

Art. No.	NV [ml]	Form	Color	Material	H [mm]	W [mm]	L [mm]	SU
200750	50	oval	white	HDPE	110,5	24,1	37,5	550
200752	100				177,5	29,1	46,6	650
200754	200				169,5	37,4	59,0	340
200756	50				98,4	25,4	45,0	480
Art. No.	NV [ml]	Form	Color	Material	H [mm]	Ø [mm]	SU	
201070	200	round	white	HDPE	147,1	47,5	280	



CLOSURES FOR COSMETIC BOTTLES

Art. No.	For bottle	Material	Color	H [mm]	Ø [mm]	Carton
200751	200756	PP	white	27,2	20,6	480
200753	200752			31,5	24,5	650
200755	200754			39,0	29,6	240
201191	201070			26,2	23,3	280
201196	Spray insert	HDPE	11,0	13,8		



STACKABLE CANISTER

made of natural LDPE and red screw cap

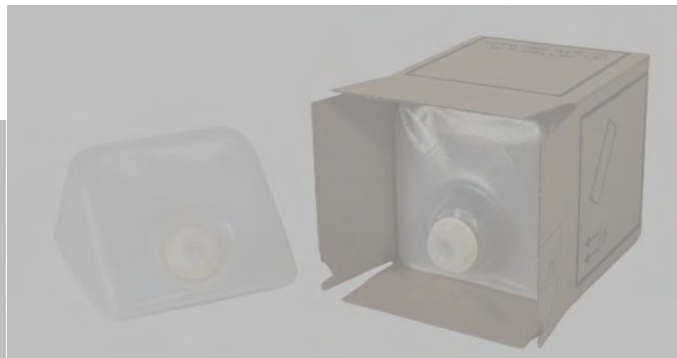
Art. No.	NV [l]	Designation	Thread	Color	H [mm]	W [mm]	L [mm]	SU
204005	3	Canister	DIN 45	clear	160,0	145,0	193,0	56
204011	5				251,0		193,0	32
204021	10	Canister "UN"			313,0	189,0	226,0	20
204014	Drain valve			red				1



COLLAPSIBLE CANISTER / POLITAINER

Collapsible canister, particularly space-saving when used as empties. The canisters are supplied with a safety lock as standard. You achieve sufficient stability through transport packaging (custom-made cardboard). Cardboard is also available with UN approval.

Art. No.	NV [l]	Designation	Thread	Color	H [mm]	W [mm]	L [mm]	SU
204320	5	Politainer	32	clear	190,0	181,0	181,0	280
204341	10				228,0	228,0	228,0	150
204361	25				274,0	274,0	370,0	70
204390		Tap	32	red				250
204348		Carton for 10 l		brown	236,0	232,0	228,0	20
204368		Carton for 25 l			386,0	290,0	306,0	10



BUCKET

Made of PP, in different versions

Art. No.	NV [l]	Lid	Material	Color	Handle	Lid color	H [mm]	Ø [mm]
204110	5	incl.	PP	white	plastic	dark blue	195,0	227,0
204114	10	incl.					210,0	290,0
204118		lid for 204110				white		286,0



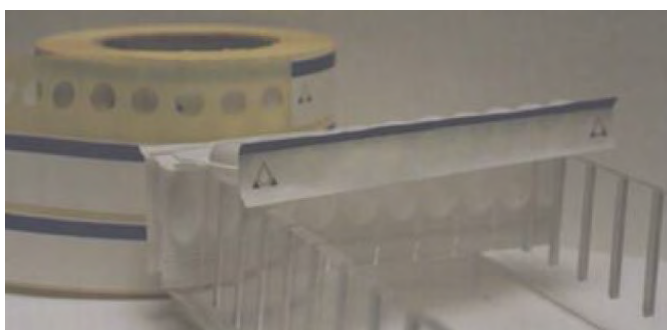
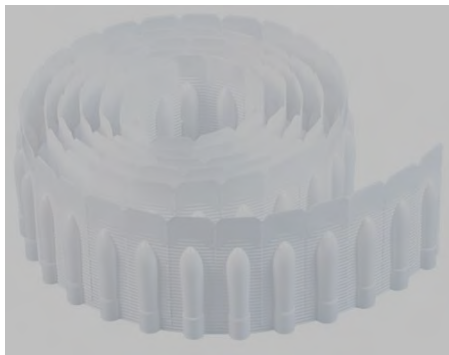
SUPPOSITORIES

Made of PVC/PE composite film with tear slit, in strips of 10 chambers.

Lightweight and easy to fill with SUPPO holder.

There is also a label for a strip so that the contents are properly protected, as well as a box for a strip.

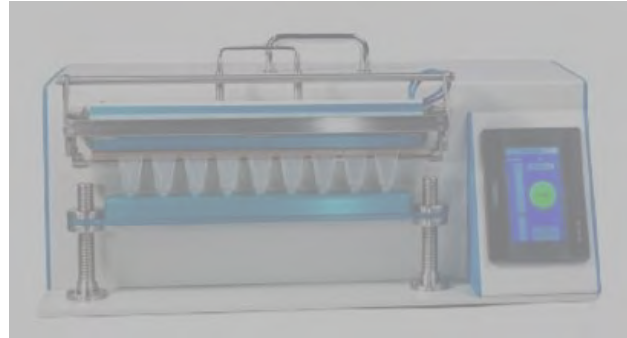
Art. No.	NV [g]	Comment	Form	Color	SU
208510	1	10 pcs	ovula	white	25
208520	2		22		
208530	3		torpedo		200
208601		Box			1
208620		3-lane label	1000 labels per roll		
208700		Holder for 10 strips		white	



VARIOUS TOOLS / DEVICES



Tube welding machine
for closing 1 PE tube up to 100 ml with
clamping rail
Item no.: 444301



Mini tube welding machine
Machine for closing plastic MINI tubes
made of PP and PE
Item no.: 444315



Dosing station for mini tubes
Dosing head and base plate made of
stainless steel, tubing made of medical
silicone, autoclavable
Item no.: 444350



tube forceps
Material: die-cast zinc, nickel-plated, handle
with PVC coating, width 55 mm
Item no.: 400070



Hand crimping pliers
Art.No. 400002 Ø 20 - all aluminum caps
Art.No. 400006 Ø 20 - Combi caps
Art.No. 400012 Ø 32 - Combi caps
Art.No. 400013 Ø 32 - all aluminum caps



Uncrimping pliers
Art.No. 400004 Ø 20
Art.No. 400014 Ø 32

Further tools/devices available upon request.

SYMBOL, ABBREVIATION, AND NOTICE EXPLANATION



ABBREVIATION	EXPLANATION	ABBREVIATION	EXPLANATION
NV	Nominal volume	SI	Sealing Insert
NG	Net weight	CSL	Child Safety Lock
HC	Hydrolytic class	CR	Casting Ring
H	Hight	C	Corrugation
W	Width	RI	Coarse
L	Length	SB	Surge Brake
∅	Diameter	LDPE	Low Density Polyethlen
SU	Sales unit	P / B	Pieces per bag
SR	Security ring	LID	Lid
RTL	Rise tube length	PP	Polypropylen
TV	Total volume	HPDE	High Density Polyethlen
SC	Sealing Cone	PE	Polyethlen
ED	Edge Dropper	ALU	Aluminium
VD	Vertical Dropper	COC	Cyclo-Olefin-Copolymer
FI	Foam insert	APO	Small pack for pharmacists